

# Joe's NEWS

Selected information from the city magazine "ONOJO"

June 15th, 2026 issue (No.1)

\*Information on this issue: as of Tue, Jun. 2<sup>nd</sup>

## Preparation for Localized Heavy Rain



Natural disasters such as floods and landslide disasters occur frequently by localized heavy rain in recent years because of the influence of global climate change etc. They are unexpected and the scale of them is sometimes beyond our imagination. However, it will be possible for us to mitigate the damage caused by disasters by taking preventive measures. We never know when disaster will occur, so it is crucial to prepare for it with proper basic knowledge to act calmly in case of a disaster.

### ●Gather information early

Please check weather information in your area

### ●Evacuate early

It is important to evacuate before heavy rain. Check weather information to know the latest weather.

Check Onojo City Disaster Prevention Map (booklet) and make sure evacuation sites in your area and actions you take during a disaster. Please take actions to protect your precious life without hesitation.

### Tips for Evacuation

○People who need time for evacuation such as the elderly and people with disabilities evacuate dangerous areas at Alert Level 3.

We create a list of people who need assistance in evacuating during a disaster. If you want to register you on this list, please contact us.

○All must evacuate at Alert Level 4.

When Alert Level 5 is issued, the situation is Life-threatening, your life is already in danger. Please evacuate dangerous areas at Alert Level 4.

Onojo City prepares Onojo City Disaster Prevention Map. Please see the upper right column about how to obtain the Onojo City Disaster Prevention Map.

(Continued on the upper right column)

## Preparation for Localized Heavy Rain

### Onojo City Disaster Prevention Map (booklet)

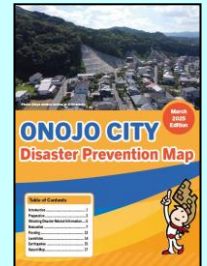
\*English, Chinese and Korean versions are available.

You can obtain them at Crisis Management Section (3<sup>rd</sup> floor, New building) and Community Culture Section (3<sup>rd</sup> floor, New building) at Onojo City Hall

\*You can also download them from the HP of Onojo City

<https://www.city.onojo.fukuoka.jp/kiji0035359/index.html>

Please check and use these for preparation to disasters.



(Continued on No.2)

## Free Distribution of Seedlings of Bellflower

Why don't you grow seedlings of bellflowers? Bellflower is a municipal flower.

### ●Distribution Date

Tue, Jul. 7<sup>th</sup>

\*It will end when the prepared seedlings run out.

### ●Time

9:30am - 4:00pm

(Will be finished if all the seedlings prepared are distributed.)

### ●Fee Free

●Venue South Entrance of Onojo City Hall

●Limit about 300 pots

\*First-come first-served basis, a pot per person

\*Only the person who visits the venue can receive a pot.

\*Please bring a bag to put the seedling in.



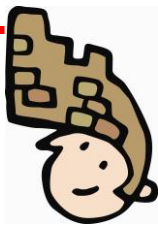
For application or further information, please contact

Community Culture Section

Tel: 092-580-1876 Fax: 092-573-7791

E-mail: [shakai@city.onojo.fukuoka.jp](mailto:shakai@city.onojo.fukuoka.jp)





# Joe's NEWS

Selected information from the city magazine "ONOJO"

June 15th, 2026 issue (No.2)

## Disaster Prevention Weather Information: Levels and Colors of Degree of Danger

○People who need time for evacuation such as the elderly and people with disabilities evacuate dangerous areas when Alert Level 3 is issued.

○All must evacuate at Alert Level 4.

A revised system of Disaster Prevention Weather Information began from May 29<sup>th</sup>, 2026.

### 【Disaster Prevention Weather Information: Levels and Colors of Degree of Danger】

		Alert Level	River Flooding	Heavy Rain	Landslide	Storm Surge	Actions taken by residents
Disaster Risk ↑ ↓	High	Level 5 Color: Black	Emergency Warning River Flooding, Heavy Rain, Landslide, and/or Storm Surge may be occurring. Evacuate immediately to any safer location.				Life-threatening. Take immediate action to protect your life.
	<b>Evacuate immediately / Be sure to evacuate by "Alert Level 4" from dangerous areas!</b>						
		Level 4 Color: Purple	Urgent Warning A disaster could happen at any time. Evacuate immediately from dangerous areas.				All must evacuate dangerous areas.
		Level 3 Color: Red	Warning People who take longer to evacuate (e.g., elderly) should start evacuation early.				People such as the elderly must evacuate dangerous areas.
		Level 2 Color: Yellow	Advisory Talk with your family about the dangers of a warning and how to evacuate safely.				Make sure evacuation sites and routes, etc.
Low	Level 1 White	Early Advisory Pay attention to upcoming information.				Pay attention to the latest disaster information.	

Disaster situation is announced in 5 alert levels and colors to let people understand the meaning of disaster prevention information immediately. Please protect yourself and take an evacuation action soon before a disaster occurs.

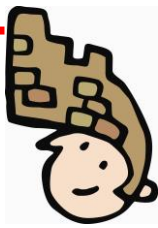
Joe'BOX



Don't feel alone.  
Please email us at [shakai@city.onojo.fukuoka.jp](mailto:shakai@city.onojo.fukuoka.jp)  
if you have any problems living in Onojo City.

For application or further information, please contact  
Community Culture Section  
Tel: 092-580-1876 Fax: 092-573-7791  
E-mail: [shakai@city.onojo.fukuoka.jp](mailto:shakai@city.onojo.fukuoka.jp)





# Joe's NEWS

Selected information from the city magazine "ONOJO"

June 15th, 2026 issue (No.3)

## Japanese Encephalitis Vaccination

Japanese Encephalitis Vaccination is one of the country's designated routine vaccinations. Please receive the vaccination confirming the subject age and the vaccination history of your child.

●Fee Free

### ●Necessary Item

Maternal and Child Health Handbook

\*Appointment in advance Necessary.

\*For further details such as designated medical institutions, please check the HP of Onojo City or contact us.



### <Japanese Encephalitis Vaccination> (Regular Vaccination)

		Subject Age	Standard Age	Vaccination Method
First stage	First time	6 months – Under 7 years and 6 months	3 years old	<Twice> 6 days or more (Recommendation: 6-28 days) between two vaccinations
	Follow-up		4 years old	<Once> 6 months or more (Recommendation: a year later) after the last vaccination
Second stage		9 years – Under 13 years old	9 years old	<Once>

(Continued on the right column)

## Japanese Encephalitis Vaccination

(continued from the left column)

### <Special Vaccination>

Subject Person	Vaccination Period	Vaccination Method		
Born on April 1 <sup>st</sup> , 2007 or before (under 20 years old) who missed the opportunity of the vaccination	Under 20 years old	The number of vaccinations already received	0	4 times: the regular method on the left table
			1	3 times: 6 days or more between three vaccinations
			2	Twice: 6 days or more between two vaccinations
			3	Once: 6 days or more after the last vaccination

\*Please consult with your family doctor about vaccination intervals.

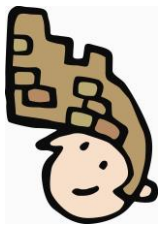
For application or further information, please contact

Community Culture Section

Tel: 092-580-1876 Fax: 092-573-7791

E-mail: shakai@city.onojo.fukuoka.jp





# Joe's NEWS

Selected information from the city magazine "ONOJO"

June 15th, 2026 issue (No.4)

## Certificate Issuance Service at Convenience Store Is Available

Certificate issuance service at convenience stores is available. You can obtain certificates at convenience stores using My Number Card (Individual Number Card) (without filling in a paper application form).

### ●Places that Certificates can be Obtained

Convenience stores which have multi-copy machines available for the issuance of the certificates

### ●Time

6:30am-11:00pm \*excluding maintenance check day

### ●Issuance Fee

250 yen

### ●Certificates that can be Obtained

- ◇Copy of residence certificate
- ◇Certificate of Seal Registration
- ◇Taxation Certificate/Tax Exemption Certificate (for the year 2025 only)

### Necessary Items to Obtain the Certificates

- ◇My Number Card ◇4-digit pin

\*This fee is also applied to obtaining certificates by operating a terminal machine installed at Onojo City Hall and each community center using My Number Card.

\*When you obtain the certificates at Onojo City Hall and each community center using Citizen Card (Shimin Card), the fee is 300 yen the same as before.

(Continued on the right column)

## Certificate Issuance Service at Convenience Store Is Available

### ●My Number Card can be used for...

- ◇Verifying identity
- ◇Health Insurance Card (In the case that you add the function of Health Insurance Card to your My Number Card)
- ◇Driver's License (In the case that you add the function of Driver's License to your My Number Card)
- ◇One-stop special application of Hometown Tax Donation, Furusto Nozei
- ◇Filing a final tax return through e-Tax (online)

Obtaining the certificates such as residence certificate, certificate of seal registration and taxation certificate, etc. through **City Online Application**.



【QR Code for City Online Application】

【QR Code for Mynaportal website】

\*You can register, check and change your registration status such as registration of My Number Card for the use of health insurance card and bank account information to receive allowances on **Mynaportal** website.

For further information, please contact us.

Joe'BOX



Don't feel alone.

Please email us at

[shakai@city.onojo.fukuoka.jp](mailto:shakai@city.onojo.fukuoka.jp)

[if you have any problems living in Onojo City.](#)

For application or further information, please contact  
Community Culture Section

Tel: 092-580-1876 Fax: 092-573-7791

E-mail: [shakai@city.onojo.fukuoka.jp](mailto:shakai@city.onojo.fukuoka.jp)





# Joe's NEWS

Selected information from the city magazine "ONOJO"

June 15th, 2026 issue (No.5)

## Do you know your physical strength? Health Performance Measurement

Do you want to know the right exercise for you? Check your physical strength with motor function measurement in the presence of a health exercise instructor and advise the right exercise for you.

### ●Subject Person

Onojo residents or those who are working in Onojo City (Aged 40 and above)

Measuring Date	Venue
Thu, Jul. 16 <sup>th</sup>	Sukoyaka Koryu Plaza

### ●Contents

- ◇Body composition measurement
- ◇Motor function tests (walking ability, muscle strength, flexibility, etc.)
- ◇Explanation of a result of motor function tests and advice on exercise based on the result by a health exercise instructor

●Limit 30 people (First-come first-served basis)

●Time Require 70 minutes

●Fee 300 yen

### ●Necessary Item

Copy of specific medical check-up results or equivalent health check-up results issued within a year, Indoor sports shoes, Drinks, Sports clothes, Towel, etc.

\*In case that you are under any medical treatment, you need an authorization from your doctor.

### ●How to Apply

Call (Phone: 092-501-2322) or visit Health Promotion Office at Sukoyaka Koryu Plaza during opening hours: Mon and Wed-Sat except national holidays, 9:00am-6:00pm (Japanese-speaking staff Only) or contact us.



## Don't feel alone. Please contact us. Domestic Violence Prevention

Please do call the following contact office or contact us if you suffer violence from your spouse or partner.

### Contact Office

#### 【Chikushi Jyosei (Women) Hotline】

Phone: 092-513-7335 Mon. and Wed.-Fri. 12:00pm - 7:00pm  
Saturday 10:00am - 5:00pm

(Japanese-speaking staff only)

\*Except National holidays and Year-end and New Year holidays

#### 【Haigusha Bouryoku Soudan Shien Senta】

(Spousal Violence Consultation and Support Center)

Phone: 092-584-0052 Mon.-Fri. 8:30am - 5:15pm

(Japanese-speaking staff only)

\*Except National holidays and  
Year-end and New Year holidays

#### 【Asian Women's Hotline】 (Asian Women's Center)

Phone: 092-513-7333

(English) Mon.-Fri. 9:00am-5:00pm

\*Except National holidays and Year-end and New Year holidays

\*Regarding consultation in foreign languages other than English,  
please check the website. <https://asianwomenscenter.jimdofree.com/>

\*Consultation is free. \*They promise confidentiality.

\*In case of emergency, please go to the nearest police box or **call 110.**



Joe'BOX



Don't feel alone.  
Please email us at  
[shakai@city.onojo.fukuoka.jp](mailto:shakai@city.onojo.fukuoka.jp)  
if you have any problems living in Onojo City.

For application or further information, please contact  
Community Culture Section  
Tel: 092-580-1876 Fax: 092-573-7791  
E-mail: [shakai@city.onojo.fukuoka.jp](mailto:shakai@city.onojo.fukuoka.jp)





# Joe's NEWS

Selected information from the city magazine "ONOJO"

June 15th, 2026 issue (No.6)

## Reiwa Kodomo Joho Center (Reiwa Children Information Center) Information Akachan (baby) Hiroba

Come join us and have a relaxing time with other mothers!

●**Subject Person** 3 months -12 months old child and their guardians living in Onojo City

\*It is not acceptable to bring siblings.

●**Contents** ◇Talk about child-rearing ◇Parent-child play ◇Reading stories ◇Parenting consultation

Date	time	Venue
Mon, Jul. 13 <sup>th</sup>	10:30am-12:00pm	Reiwa Kodomo Joho Center(Reiwa Children Information Center), Kosodate-oen (support for child raising) Floor (Sukoyaka Koryu Plaza 3F)
Mon, Jul. 27 <sup>th</sup>		

(Reception: from 10:00am - ) \*Participation is limited to once a month.

●**Fee** Free

\*Limited Parking

## Reiwa Kodomo Joho Center (Reiwa Children Information Center) Information Asobi-no-Hiroba (play area)

●**Subject Person** 0-year-old children - preschoolers and their guardians living in Onojo City

Date	Class	Time	Reception
Tue, Jul. 14 <sup>th</sup>	Class for Children aged 2-5	9:30am - 10:30pm	from 9:20am
	Class for Children aged 0-1	11:00am - 12:00pm	from 10:50am

●**Contents** ◇parent-child play

●**Limit** 50 groups each time (First-come First-served Basis)

●**Venue** Reiwa Kodomo Joho Center (Reiwa Children Information Center), Kosodate-oen (support for child raising) Floor (Sukoyaka Koryu Plaza 3F)

\*No application necessary. \*Free of charge.

## Reiwa Kodomo Joho Center (Reiwa Children Information Center) Information Nobinobi Hiroba

Why don't you experience parent-child play and picture book reading with our day-care center staff?

●**Subject Person** Children aged 1 - 3 and their guardians living in Onojo City

\*Please consult as to participation of siblings.

●**Date and Time**

Dates	Fri, Aug. 7 <sup>th</sup>	Mon, Aug. 17 <sup>th</sup>	Tue, Aug. 25 <sup>th</sup>
Class for Children aged 1	10:45am-11:45am	3:00pm-4:00pm	10:45am-11:45am
Class for Children aged 2 and 3	3:00pm-4:00pm	10:45am-11:45am	3:00pm-4:00pm

(Reception: from 15 minutes before the class starts.)

\*Multiple participation is not acceptable.

●**Venue** Reiwa Kodomo Joho Center(Reiwa Children Information Center), Kosodate-oen (support for child raising) Floor (Sukoyaka Koryu Plaza 3F)

●**Necessary Items** ◇water bottle ◇towel ◇extra clothes

\*Please join wearing casual clothes.

●**Fee** free ●**Limit** 10 groups / each time (a drawing)

●**How to Apply** Online

\*Please apply through online form during the application period by scanning the two-dimensional code below.

●**Application Period** from Wed, Jul. 1<sup>st</sup> to Tue, Jul. 7<sup>th</sup>



For application or further information, please contact  
Community Culture Section

Tel: 092-580-1876 Fax: 092-573-7791

E-mail: shakai@city.onojo.fukuoka.jp





# Joe's NEWS

Selected information from the city magazine "ONOJO"

June 15th, 2026 issue (No.7)

## Reiwa Kodomo Joho Center (Reiwa Children Information Center) Information Ehon-no-Hiroba (Picture book reading)

● **Subject Person** 0-year-old children - preschoolers and their guardians living in Onojo City

● **Dates** Thu, Jul. 23<sup>rd</sup>

● **Time** 2:00pm-4:00pm

● **Contents** ◇reading picture books ◇lending picture books

● **Venue** Reiwa Kodomo Joho Center (Reiwa Children Information Center), Kosodate-oen (support for child raising) Floor (Sukoyaka Koryu Plaza 3F)

\*No application necessary. \*Free of charge.



## Let's go to "Star-dome-madoka"!

### Let's watch "Spring Triangle" and the stars together!



● **Date and Time** Sat, Jun. 27<sup>th</sup> 7:00pm - 8:50pm

● **Content** ◇Observing the stars in spring with a telescope

◇Observing Jupiter, the moon, Venus with a telescope

● **Venue** Kita Community Center, "Star-dome-madoka"

● **Fee** Free

\*No registration in advance necessary.

\*Junior High School students and younger must be accompanied by their guardians.

\*In the case of rain or cloudiness, a story telling will be held in a room.

## Reiwa Kodomo Joho Center (Reiwa Children Information Center) Information Oyako Salon (Parent-Child Salon)

● **Subject Person** Preschoolers and their guardians

● **Time** 10:00am - 4:00pm

\*2 hours maximum for each use

● **Opening days** Mon. Wed. Thu. Fri. Sat. Sun.

\*Closed on Tue, 1<sup>st</sup> Sun, National Holidays (except May 3<sup>rd</sup>-May 5<sup>th</sup>), Year-end and New Year holidays from Dec. 28<sup>th</sup> to Jan. 4<sup>th</sup>)

● **Limit** 50 groups (First-come First-served Basis)

● **Venue** Reiwa Kodomo Joho Center (Reiwa Children Information Center), Oyako Salon (Parent-Child Salon) (Sukoyaka Koryu Plaza 1F)

\*No application necessary. \*Free of charge.

## Bookstart

### - Please receive picture books for your baby from Onojo City -

If you have a 4-month-old or older baby, two Japanese picture books will be presented when attending Onojo City Bookstart Story-Telling Session. Though the session will be held in Japanese, you will be able to enjoy picture books with your baby.

● **Subject Person**

Babies aged 4 months - 15 months and their guardians living in Onojo City

\*The notice letter will be sent by post to subject babies' guardians with a notification letter of 4 months health check-up on the month that babies turn 4 months old.

## Seasonal Event - Star Festival -

### Let's make *Tanzaku* and watch the stars together!

July 7<sup>th</sup> is *Tanabata*, the Star Festival. This festival is derived from the legend of Vega (Orihime) and Altair (Hikoboshi) who are separated by the Milky Way (Amanogawa). It is said that they can only meet on this day in a year. On this day we make *Tanzaku*, a strip of colored paper and write prayer's wish on it. Let's write your wish on *Tanzaku* and watch stars!

● **Date and Time** Tue, Jul. 7<sup>th</sup> 7:00pm - 8:50pm

● **Contents** ◇Observing the stars in spring with a telescope

◇Observing the moon, Venus with a telescope

● **Venue** Kita Community Center, "Star-dome-madoka"

● **Fee** Free

\*No registration in advance necessary.

\*Junior High School students and younger must be accompanied by their guardians.

\*In the case of rain or cloudiness, a story telling, making *Tanzaku* and quizzes will be held in a room.



For application or further information, please contact

Community Culture Section

Tel: 092-580-1876 Fax: 092-573-7791

E-mail: [shakai@city.onojo.fukuoka.jp](mailto:shakai@city.onojo.fukuoka.jp)



## Viewing the city magazine ONOJO in multiple languages is available through a multilingual translation service "Catalog Pocket"

"Catalog Pocket" is a multilingual translation service which allows you to read the city magazine ONOJO in 10 languages on PC and mobile phone.

\*It is free for viewing information posted on "Catalog Pocket", but you are responsible for the usage fee.

### ●Useful functions of "Catalog Pocket"

#### Available in 10 languages including Japanese

English, Korean, Chinese (simplified and traditional), Thai, Portuguese, Spanish, Indonesian, Vietnamese

\* An automatic translation system is used for the translation.

#### Convert text to sound and read it aloud

#### Make font size larger

### ●How to View

1. Scan the two-dimension code below and access "Catalog Pocket".
2. Search: Type「大野城市 (onojo or onojo city would be acceptable)」in Search Box.
3. Move to the page of Onojo City: the city magazine ONOJO.
4. Click the image of the city magazine ONOJO.
5. Select the language you want to use.
6. Press 「閲覧する (View)」.
7. View the articles in the language you selected.

For further information, please contact us.



## Onojo Cocoro-no-furusato-kan City Museum

Visitors are able to learn the history of Onojo City easily and widely through exhibitions.

### ●Closed Every Monday

\*If Monday falls on a public holiday, the museum is closed on the following weekday.

### ●Hours 9:00am - 7:00pm

### ●Admission Permanent Exhibition: Free

\*Special Exhibition: Charged

### ●Address 3-8-3 Akebono-machi, Onojo City



## Consultation in Foreign Languages FUKUOKA IS OPEN CENTER

### ●Opening Hours Monday - Friday 10:00am - 5:00pm

\*Also open on 3<sup>rd</sup> Sunday and 4<sup>th</sup> Saturday of each month

\*Closed during year-end, New Year's and national holidays

### ●Venue

FUKUOKA IS OPEN CENTER General Reception Counter

[Address: ACROS Fukuoka 3F, 1-1-1 Tenjin, Chuo-ku, Fukuoka City]

### ●We are available for consultation In-person, Online, Email, Phone

### ●Phone Number 0120-279-906 (Toll-free)

●Support Languages Japanese, English, Chinese, Korean, Vietnamese, Nepalese, Indonesian, Tagalog, Thai, Malay, Spanish, French, German, Italian, Russian, Portuguese, Burmese, Khmer, Mongolian, Sinhala, Hindi, Bengali, Urdu, Ukrainian

\*Consultation is free of charge.

\*Your private information will be kept confidential.

\*Anonymous consultations are also possible.

### ●Fukuoka International Medical Support Center

TEL : 092-286-9595

\*Available all year round (24 hours per day, 365 days per year)

\*Supported Languages:

English, Chinese, Korean, Thai, Vietnamese, Indonesian, Tagalog, Nepali, Malay, Spanish, Portuguese, German, French, Italian, Russian, Khmer language, Burmese, Sinhara, Mongolian, Hindi, Bengali, Urdu, Turkish

## Information on Opening Hours

Jun. 15<sup>th</sup> Onojo Cocoro-no-furusato-kan City Museum will be CLOSED

Jun. 17<sup>th</sup> Madokapia will be CLOSED

Jun. 22<sup>nd</sup> Onojo Cocoro-no-furusato-kan City Museum will be CLOSED

Jun. 27<sup>th</sup> Citizen Service Section will be open from 9:30am to 12:30pm

Jun. 29<sup>th</sup> Onojo Cocoro-no-furusato-kan City Museum will be CLOSED

For application or further information, please contact  
Community Culture Section

Tel: 092-580-1876 Fax: 092-573-7791

E-mail: shakai@city.onojo.fukuoka.jp

