

Joe's NEWS

Selected information from the city magazine "ONOJO"

May 15th, 2026 issue (No.1)

Application deadline is June 30th

Child-rearing support allowance responding to rising prices

To support child-rearing households which will be greatly affected by rising prices, Onojo City will distribute 27,000 yen per eligible child. (7,000 yen will be added as a unique financial support by the city to 20,000 yen offered by the national government.)

●Eligibility

Persons who fall under any of the following;

- ①Recipients of Child Allowance for Sep. 2025 from Onojo City (the allowance for Oct. 2025 for children born in Sep. 2025)
- ②Public servants who received Child Allowance for Sep. 2025 through the workplace (the allowance for Oct. 2025 for children born in Sep. 2025)
- ③Recipients of Child Allowance for children born between Oct. 1st, 2025 and Mar. 31st, 2026
- ④Persons who newly become a recipient of Child Allowance due to divorce etc. between Oct. 1st, 2025 and Mar.31st, 2026 (There are conditions.)
- ⑤Persons who did not receive Child Allowance for Sep. 2025 due to delayed application, but raised a child of high school age or younger as of Sep. 30th, 2025

●Payment Amount 27,000 yen per eligible child (one time only)

●How to Apply

◇Persons who do not need to apply...Those who fall under ① above

The allowance will be transferred to the bank account of receiving Child Allowance.

◇Persons who need to apply...Those who fall under ②, ③, ④ or ⑤ above

For further information or applications, please contact us.

●Application Deadline **Tue, June 30th, 2026**

*For further information, please refer to the website of Children and Families Agency or contact us.

Website of Children and Families Agency

<https://www.cfa.go.jp/policies/kokoseido/kosodate-ouenteate>

Application for Fukuoka Prefecture Housing Project

Fukuoka Prefecture Housing Project rooms are available. If you wish to apply, please receive the application handbook at local government offices.

●Distribution Period Thu, May 28th - Fri, Jun. 12th

●Application Acceptance Period Thu, Jun. 4th - Fri, Jun. 12th

●How to Apply Send the application form attached in the handbook by postal mail using the addressee-printed envelope attached in the handbook. The postage must be borne by applicants.

*Please check the application form (available only in Japanese) for further information about the housing.

Season of Firefly is coming soon!

Let's enjoy appreciating fireflies! The season of fireflies is coming soon around Ushikubi River. Fireflies live in a clean and pure river and a place covered with rich green. Please thank and protect them and their surrounding environment.



The Best Time to See Fireflies

●Period Late May - Early June

●Time 7:30pm - 8:30pm, especially at humid and windless night after a rain

●Access

20 minutes walk from the bus stop "Hiranohaitsu-iriguchi" (Nishitetsu Bus Root #21 from Nishitetsu Shimoori Sta.), 15minutes walk from the bus stop "Hara" (Nishitetsu Bus Root #23 from Nishitetsu Shimoori Sta.)

●Manners

No Light, No Smoking, No Food, No Pets, No Viewing after 9:00pm, No Bringing back fireflies home, No Parking outside the designated parking lot, No Entering private land.

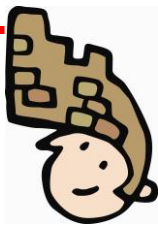
*Please take the public transportation to protect the environment and reduce traffic congestion.

For application or further information, please contact
Community Culture Section

Tel: 092-580-1876 Fax: 092-573-7791

E-mail: shakai@city.onojo.fukuoka.jp





Joe's NEWS

Selected information from the city magazine "ONOJO"

May 15th, 2026 issue (No.2)

Application for Using Randoseru Club, after-school day care, during Summer Holidays (G-registration)

- **Subject School** Public Elementary School in Onojo City
- **Subject Person** Those who fall under all of the following conditions.
Elementary School 1st – 6th grade students whose guardians or house mates are unable to provide supervision for 4 hours or more per day between 8:00am and 5:00pm for 12 days or more per month due to work or other commitments. (excluding Sundays)
*Regarding the extended-hours care and the day care on Saturdays, there are other conditions.
- **Day Care Period**
Fri, Jul. 17th, 2026 - Tue, Sep. 1st, 2026
*Closed on Sundays, National Holidays, Bon Holidays from Wed, Aug. 13th to Fri, Aug. 15th
*It is possible to set the day care start day on Mon, Aug. 3rd.
*In the case of using the day care on Saturday, it is possible to set the day care start day on Sat, Aug. 1st.
*Please use during the day care period.
- **Open Days and Hours**
 - ◆ Regular care 8:00am - 5:00pm
 - ◆ Extended-hours care 5:00pm - 7:00pm*
*You may apply for the extended-hours care provided that you apply for regular care.
 - ◆ Saturdays 8:00am - 5:00pm
*There is no extended-hours care on Saturday.
- **Day Care Fee** (A fee exemption is available)

	For July	For August	For September
Weekdays	2,120 yen	4,680 yen	210 yen
Extended-hours Care	1,730 yen	3,820 yen	170 yen
Saturdays	800 yen	2,000 yen	

*Payment will be calculated by the day during the day care period.

(Continued on the right column)

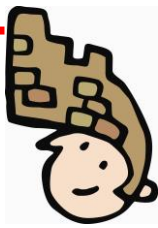
Application for Using Randoseru Club, after-school day care, during Summer Holidays (G-registration)

- **How to Apply**
- ◇ **Submit by visiting**
Fill in the application form*¹ (distributed at School-Community Cooperation Section and each community center) and submit it together with necessary documents such as guardian's Work Certificate (Kinmu Shomeisho) to School-Community Cooperation Section at Onojo City Office*².
*¹You can download the application form from the HP of Onojo City.
*²Application acceptance is on weekdays during opening hours.
○ **Application Period** Wed, May 13th - Mon, May 25th
*If you fail to apply during the application period, it would be difficult to use the day care during Summer Holidays.
- ◇ **Online**
Apply online*¹ with necessary documents such as guardian's Work Certificate (Kinmu Shomeisho)
*¹Please scan the two-dimensional code below and access the online application form. The code will be available from May 13th.
*One online application per child
○ **Application Period** Wed, May 13th at 8:30am - Mon, May 25th at 11:59pm
*If you fail to apply during the application period, it would be difficult to use the day care during Summer Holidays.



For application or further information, please contact
Community Culture Section
 Tel: 092-580-1876 Fax: 092-573-7791
 E-mail: shakai@city.onojo.fukuoka.jp





Joe's NEWS

Selected information from the city magazine "ONOJO"

May 15th, 2026 issue (No.3)

Short-Term Parenting Support Program (Short Stay, Twilight Stay)

Short Stay

In cases where parenting becomes temporarily challenging due to the illness, parental fatigue, childbirth, nursing, ceremonial occasions, work trips, etc., children can be temporarily cared for at child welfare facilities for a limited time period.

- **Eligibility** Children aged under 18 registered with Onojo City
- **Available Period** Within 7 days with overnight stay per use

Twilight Stay

In cases where guardians are unable to take care of their child due to work or other commitments on weekdays at night or weekends, children can be temporarily cared for at child welfare facilities for a limited time period.

- **Eligibility** Children aged under 18 registered with Onojo City
- **available Period** Up to 4 hours from 4:00pm to 9:00pm on weekdays or up to 8 hours from 8:00am to 9:00pm on weekends and holidays without overnight stay

Entei Kaiho (Open Playground)

Why don't you play with other children in nursery school's playgrounds?

- **Subject Person** Preschoolers and their guardians
- **Date and Venue**

Venue	Day
Ono kita Nursery School	Sat, Jun. 6 th
Ono Minami Nursery School	Sat, Jun. 13 th
Tsutsui Nursery School	Sat, Jun. 20 th

- **Time** 9:00am-11:00pm

- *In the case of rain, Entei Kaiho (Open Playground) will be cancelled.
- *Day and time might be changed due to the schedule of the nursery schools. Please contact us beforehand when you join.
- *There is no parking space at Ono Minami Nursery School.
- *No reservation is necessary.



Short-Term Parenting Support Program (Short Stay, Twilight Stay)

(Continued from the left upper column)

●Fee

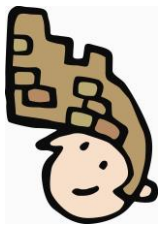
Division of Household	Fee for User			
	Short Stay (per day)		Twilight Stay (per day)	
	Children aged under 2	Children aged 2 or older	Weekdays	Weekends and Holidays
Household on welfare	free	free	free	free
household of city tax-exempt				
Households whose municipal tax for annual per capita income is less than 77,101 yen	1,100 yen	1,100 yen	350 yen	350 yen
None of the above	5,500 yen	2,850 yen	1,000 yen	1,500 yen

*Single-parent households which are exempted from city tax are the same division as Household on welfare. *Fee is for 2 days as to one night and two days.

(Continued on No.4)

For application or further information, please contact
Community Culture Section
 Tel: 092-580-1876 Fax: 092-573-7791
 E-mail: shakai@city.onojo.fukuoka.jp





Joe's NEWS

Selected information from the city magazine "ONOJO"

May 15th, 2026 issue (No.4)

Short-Term Parenting Support Program (Parent-Child Short Stay) Parent-Child Short Stay

This program provides support for guardians who are experiencing parental fatigue and seeking rest or struggling with parenting methods and interactions with their children. Guardians and children can stay overnight while receiving counseling support. It is a service that addresses the care needs of both parents and children.

●Eligibility

Children aged under 18 and their guardians registered with Onojo City

●Available Period

Within 7 days per time

●Fee

Division of Household	Fee for User
	per day
Household on welfare	free
household of city tax-exempt	1,100 yen
Households whose municipal tax for annual per capita income is less than 77,101 yen	1,500 yen
None of the above	4,800 yen

*Single-parent households which are exempted from city tax are the same division as Household on welfare.

*Fee is for 2 days as to one night and two days.

(Continued on the right column)

Short-Term Parenting Support Program (Short Stay, Twilight Stay and Parent-Child Short Stay)

Common Items

●Available Facility Child Welfare Facility

●Pick-up and drop-off Pick-up and drop-off are done by guardians, in principle

●Payment of Usage Fee Pay to the city after use of the service

●How to Apply Submit an application form distributed at Child and Family Center

●Short-Term Parenting Support Program is not available in the following cases.

◇Contracted an infectious disease

◇Need treatment at a medical institution

◇Need special medical care and nursing

◇Have difficulty living in a community

●Others

Interview is required before using the services. Considering the contents of the application and interview, the city will decide the availability.

For further information, please check the website of Onojo City or contact us.



Severe Water Shortage

We ask for your cooperation in conserving water.

Two-thirds of the tap water supply in the city is from Chikugo River. However, due to low rainfall, water storage in the dams related to Chikugo River system is declining. Your effort to conserve water will lead to the protection of our precious water resources. Therefore, we ask for your cooperation in conserving water.

For application or further information, please contact
Community Culture Section

Tel: 092-580-1876 Fax: 092-573-7791

E-mail: shakai@city.onojo.fukuoka.jp





Joe's NEWS

Selected information from the city magazine "ONOJO"

May 15th, 2026 issue (No.5)

Reiwa Kodomo Joho Center (Reiwa Children Information Center) Information Akachan (baby) Hiroba

Come join us and have a relaxing time with other mothers!

●**Subject Person** 3 months -12 months old child and their guardians living in Onojo City

*It is not acceptable to bring siblings.

●**Contents** ◇Talk about child-rearing ◇Parent-child play ◇Reading stories ◇Parenting consultation

Date	time	Venue
Mon, Jun. 15 th	10:30am-12:00pm	Reiwa Kodomo Joho Center(Reiwa Children Information Center), Kosodate-oen (support for child raising) Floor (Sukoyaka Koryu Plaza 3F)
Mon, Jun. 22 nd		

(Reception: from 10:00am -) *Participation is limited to once a month.

●**Fee** Free

*Limited Parking

Reiwa Kodomo Joho Center (Reiwa Children Information Center) Information Asobi-no-Hiroba (play area)

●**Subject Person** 0-year-old children - preschoolers and their guardians living in Onojo City

Date	Class	Time	Reception
Tue, Jun. 9 th	Class for Children aged 2-5	9:30am - 10:30pm	from 9:20am
	Class for Children aged 0-1	11:00am - 12:00pm	from 10:50am

●**Contents** ◇parent-child play

●**Limit** 50 groups each time (First-come First-served Basis)

●**Venue** Reiwa Kodomo Joho Center (Reiwa Children Information Center), Kosodate-oen (support for child raising) Floor (Sukoyaka Koryu Plaza 3F)

*No application necessary. *Free of charge.

Reiwa Kodomo Joho Center (Reiwa Children Information Center) Information Nobinobi Hiroba

Why don't you experience parent-child play and picture book reading with our day-care center staff?

●**Subject Person** Children aged 1 - 3 and their guardians living in Onojo City

*Please consult as to participation of siblings.

●**Date and Time**

Dates	Tue, Jul. 7 th	Wed, Jul. 29 th	Fri, Jul. 31 st
Class for Children aged 1	3:00pm-4:00pm	10:45am-11:45am	3:00pm-4:00pm
Class for Children aged 2 and 3	10:45am-11:45am	3:00pm-4:00pm	10:45am-11:45am

(Reception: from 15 minutes before the class starts.)

*Multiple participation is not acceptable.

●**Venue** Reiwa Kodomo Joho Center(Reiwa Children Information Center), Kosodate-oen (support for child raising) Floor (Sukoyaka Koryu Plaza 3F)

●**Contents** ◇Let's touch agar and enjoy its feeling!

●**Necessary Items** ◇water bottle ◇towel ◇extra clothes

*Please join wearing casual clothes.

●**Fee** free ●**Limit** 10 groups / each day (a drawing)

●**How to Apply** Online

*Please apply through online form during the application period by scanning the two-dimensional code below.

●**Application Period** from Mon, Jun. 1st to Sun, Jun. 7th



For application or further information, please contact
Community Culture Section

Tel: 092-580-1876 Fax: 092-573-7791

E-mail: shakai@city.onojo.fukuoka.jp





Joe's NEWS

Selected information from the city magazine "ONOJO"

May 15th, 2026 issue (No.6)

Let's go to "Star-dome-madoka"!

Let's watch the moon and stars together!

- **Date and Time** Sat, May 30th 7:00pm - 8:50pm
- **Venue** Kita Community Center, Star-dome-madoka
- **Fee** Free
- **Contents** ◇ Observing the stars in spring, the moon, Venus and Jupiter with a telescope



*No registration in advance necessary.

*Junior High School students and younger must be accompanied by their guardians.

*In the case of rain or cloudiness, a story telling will be held in a room.

Reiwa Kodomo Joho Center (Reiwa Children Information Center) Information Oyako Salon (Parent-Child Salon)

- **Subject Person** Preschoolers and their guardians
 - **Time** 10:00am - 4:00pm
*2 hours maximum for each use
 - **Opening days** Mon. Wed. Thu. Fri. Sat. Sun.
*Closed on Tue, 1st Sun, National Holidays (except May 3rd-May 5th), Year-end and New Year holidays from Dec. 28th to Jan. 4th)
 - **Limit** 50 groups (First-come First-served Basis)
 - **Venue** Reiwa Kodomo Joho Center (Reiwa Children Information Center), Oyako Salon (Parent-Child Salon) (Sukoyaka Koryu Plaza 1F)
- *No application necessary. *Free of charge.

Onojo Cocoro-no-furusato-kan City Museum

Visitors are able to learn the history of Onojo City easily and widely through exhibitions.

- **Closed** Every Monday
*If Monday falls on a public holiday, the museum is closed on the following weekday.
- **Hours** 9:00am - 7:00pm
- **Admission** Permanent Exhibition: Free
*Special Exhibition: Charged
- **Address** 3-8-3 Akebono-machi, Onojo City



Reiwa Kodomo Joho Center (Reiwa Children Information Center) Information Ehon-no-Hiroba (Picture book reading)

- **Subject Person** 0-year-old children - preschoolers and their guardians living in Onojo City
- **Dates** Fri, Jun. 26th
- **Time** 2:00pm-4:00pm
- **Contents** ◇ reading picture books ◇ lending picture books
- **Venue** Reiwa Kodomo Joho Center (Reiwa Children Information Center), Kosodate-oen (support for child raising) Floor (Sukoyaka Koryu Plaza 3F)



*No application necessary. *Free of charge.

Onojo Premium Voucher

Onojo Society of Commerce and Industry will sell the Onojo Premium Vouchers. They sell the vouchers with 20% premium. (e.g. 12,000 yen voucher can be purchased by paying 10,000 yen.) Digital and paper premium vouchers are available. A flyer of the digital premium voucher reservation will be distributed with the May 15th issue of the City Magazine "Onojo". Information of the paper premium voucher reservation will be distributed with the June 1st issue of the City Magazine "Onojo".

- **Maximum Purchase Amount per Person**
50,000 yen
- **Reservation Application Acceptance Period for Digital Premium Voucher**
Fri, May 15th at 9:00am - Wed, May 27th at 11:59pm
*Please apply through the dedicated app.
*A drawing will be held. The result will be announced on Mon, Jun. 1st at 10:00am.
For further information or applications, please see the flyer of the digital premium voucher reservation.

For application or further information, please contact
Community Culture Section
Tel: 092-580-1876 Fax: 092-573-7791
E-mail: shakai@city.onojo.fukuoka.jp



Viewing the city magazine ONOJO in multiple languages is available through a multilingual translation service "Catalog Pocket"

"Catalog Pocket" is a multilingual translation service which allows you to read the city magazine ONOJO in 10 languages on PC and mobile phone.

*It is free for viewing information posted on "Catalog Pocket", but you are responsible for the usage fee.

●Useful functions of "Catalog Pocket"

Available in 10 languages including Japanese

English, Korean, Chinese (simplified and traditional), Thai, Portuguese, Spanish, Indonesian, Vietnamese

* An automatic translation system is used for the translation.

Convert text to sound and read it aloud

Make font size larger

●How to View

1. Scan the two-dimension code below and access "Catalog Pocket".
2. Search: Type「大野城市 (onojo or onojo city would be acceptable)」in Search Box.
3. Move to the page of Onojo City: the city magazine ONOJO.
4. Click the image of the city magazine ONOJO.
5. Select the language you want to use.
6. Press 「閲覧する (View)」.
7. View the articles in the language you selected.



For further information, please contact us.

Consultation in Foreign Languages FUKUOKA IS OPEN CENTER

●Opening Hours Monday - Friday 10:00am - 5:00pm

*Also open on 3rd Sunday and 4th Saturday of each month

*Closed during year-end, New Year's and national holidays

●Venue

FUKUOKA IS OPEN CENTER General Reception Counter

【Address: ACROS Fukuoka 3F, 1-1-1 Tenjin, Chuo-ku, Fukuoka City】

●We are available for consultation In-person, Online, Email, Phone

●Phone Number 0120-279-906 (Toll-free)

●Support Languages Japanese, English, Chinese, Korean, Vietnamese, Nepalese, Indonesian, Tagalog, Thai, Malay, Spanish, French, German, Italian, Russian, Portuguese, Burmese, Khmer, Mongolian, Sinhala, Hindi, Bengali, Ukrainian, Urdu

*Consultation is free of charge.

*Your private information will be kept confidential.

*Anonymous consultations are also possible.

●Fukuoka International Medical Support Center

TEL : 092-286-9595

*Available all year round (24 hours per day, 365 days per year)

*Supported Languages:

English, Chinese, Korean, Thai, Vietnamese, Indonesian, Tagalog, Nepali, Malay, Spanish, Portuguese, German, French, Italian, Russian, Khmer language, Burmese, Sinhara, Mongolian, Hindi, Bengali, Urdu, Turkish

Information on Opening Hours

May 18th Onojo Cocoro-no-furusato-kan City Museum will be CLOSED

May 20th Madokapia will be CLOSED

May 23rd Citizen Service Section will be open from 9:30am to 12:30pm

May 25th Onojo Cocoro-no-furusato-kan City Museum will be CLOSED

Joe'BOX



Don't feel alone.

Please email us at

shakai@city.onojo.fukuoka.jp

if you have any problems living in Onojo City.

For application or further information, please contact
Community Culture Section

Tel: 092-580-1876 Fax: 092-573-7791

E-mail: shakai@city.onojo.fukuoka.jp

